



bizhub® C659

COLOR HIGH-VOLUME MULTIFUNCTION PRINTER

Up to 65 ppm print/copy output to keep pace with rising demands

Standard dual scanning handles up to 240 originals per minute

High capacity 300-sheet document feeder

Large 10.1" color display with quick tablet-like touchscreen interface

Scan-to-email and FTP, scan-to-me, scan-to-home convenience

Built-in Emperon® print system, universal printer drivers

Simitri® HD polymerized toner for high-resolution imaging

Standard 250 GB HDD for on-board document storage

Web browser with 4 GB of memory

ISO 15408 and IEEE 2600.1 security standards

Power-saving design with quick recovery from sleep mode

6,650-Sheet maximum capacity, tab printing support, carbon-copy printing

Advanced authentication, secure print release, remote firmware updates

Multiple bypass tray and detachable paper feed trays improve paper handling

Finishing options for 80-page booklet-making, up to 100-sheet stapling

Options for 2/3-hole punch, tri-fold, z-fold, post-insertion and more

Downloadable apps to help you work faster and smarter

Multiple i-Options to suit the needs of your workflow

EPEAT Gold-certified, low power consumption to cut costs

Mobile printing support (AirPrint, Google Cloud Print Classic, NFC)

bizhub C659

COLOR HIGH-VOLUME MULTIFUNCTION PRINTER

Superior color, spectacular speed and simple touch-and-swipe operation make the bizhub C659 an ideal document solution for high-volume applications. Output speeds of 65 ppm plus duplex scanning at up to 240 opm keep work flowing — and you'll have powerful, scalable options to increase your productivity and help control your costs.

SYSTEM OVERVIEW

System memory	4 GB
System hard disk	250 GB Standard
Interface	10-BASE-T / 100-BASE-TX / 1,000-BASE-T Ethernet, USB 2.0
Network protocols	TCP/IP (IPv4/IPv6), SMB v2, LPD, IPP, SNMP, HTTP
Frame types	Ethernet 802.2, Ethernet 802.3, Ethernet II, Ethernet SNAP
Dual scan document feeder	Up to 300 originals / 5.5" x 8.5" to 11" x 17" / 35-210 gsm
Printable paper size	Scanning/Copying: up to 11" x 17" Printing: up to 11" x 17" full bleed on 12" x 18" paper Custom paper sizes Banner paper max.: 11.75" x 47.25"
Printable paper weight	52-300 gsm
Paper input capacity	Standard: 3,650 sheets / Max.: 6,650 sheets
Tray 1	500 sheets / 5.5" x 8.5" to 12" x 18" / 52-256 gsm
Tray 2	500 sheets / 5.5" x 8.5" to 12" x 18" / 52-256 gsm
Tray 3	1,500 sheets / 5.5" x 8.5", 4" x 6" / 52-256 gsm
Tray 4	1,000 sheets / 5.5" x 8.5", 4" x 6" / 52-256 gsm
Large capacity tray LU-205 (optional)	2,500 sheets / 8.5" x 11" to 12" x 18" / 52-256 gsm
Large capacity tray LU-303 (optional)	3,000 sheets / 8.5" x 11" / 52-256 gsm
Manual bypass	150 sheets / 4" x 6" to 12" x 18" / custom paper sizes / 50-300 gsm
Automatic duplexing	5.5" x 8.5" to 12" x 18" / 52-256 gsm
Finishing modes	Offset, group, sort, staple, punch, half-fold, z-fold, tri-fold, post-insertion, booklet
Output capacity	Max. with finisher: 3,300 sheets Max. without finisher: 250 sheets
Stapling (optional)	Max.: 100 sheets or 94 sheets + 2 cover sheets (up to 209 gsm)
Stapling output capacity	Max.: 1,000 sheets
Tri-fold (optional)	Up to 3 sheets
Tri-fold capacity	Max.: 30 sheets (tray)
Booklet (optional)	Max.: 20 sheets or 19 sheets + 1 cover sheet (up to 209 gsm)
Booklet output capacity	Max.: 100 sheets (tray)
Copy/print volume	Max.: 300,000 pages / month ¹
Toner lifetime	Black: 48,900 pages / CMY: 33,200 pages
Imaging unit lifetime	Black: 300,000 pages / 1,200,000 pages (Drum/Developer) CMY: 200,000 pages
Power consumption	120 V / 60 Hz, less than 2.1 kW (system)
System dimensions	25.5" x 31.5" x 45.5" (W x D x H)
System weight	Approx. 487 lb.

COPIER SPECIFICATIONS

Copying process	Electrostatic laser copy, tandem, indirect
Toner system	Simitri® HD Polymerized Toner
Print speed (8.5" x 11")	B&W / Color: up to 65 / 65 ppm (Portrait)
Print speed (11" x 17")	B&W / Color: up to 33 / 33 ppm (Portrait)
Autoduplex speed (8.5" x 11")	B&W / Color: up to 65 / 65 ppm (Portrait)
1st copy out time	B&W: 3.7 sec. / Color: 4.9 sec.
Warm-up time	B&W: approx. 22 sec. ² / Color: 35 sec. ²
Copy resolution	600 x 600 dpi
Gradations	256 gradations
Multi-copy	1-9,999
Original format	Up to 11" x 17"
Magnification	25-400% in 0.1% steps, auto zooming
Copy functions	Electronic sorting, multi-job, adjustments (contrast, sharpness, image density), proof copy, interrupt mode, color mode, separate scan, sort/group, combination, original selection, ID card copy, 2-in-1, 4-in-1

PRINTER SPECIFICATIONS (STANDARD)

Print resolution	1,800 (equivalent) x 600 dpi, 1,200 x 1,200 dpi
PDL	PCL6 (XL 3.0), PCL5e/c, PostScript 3 (ver. 3016), XPS
Operating systems	Windows (x32 / x64): 7 / 8 / 10 Windows Server (x32 / x64): 2008 / 2008 R2 ³ / 2012 ³ / 2016 ³ Macintosh OS X 10.8 or later Linux / Unix / Citrix
Printer fonts	80 PCL Latin, 137 PostScript 3
Print functions	Direct Print of PCL, PS, TIFF, XPS, PDF, encrypted PDF files and OOXML (DOCX, XLSX, PPTX), mixmedia and mixplex, "Easy Set" job programming, overlay, watermark, copy protection, carbon copy print

PRINTER SPECIFICATIONS (OPTIONAL)

Print controller	Embedded Fiery IC-418 (VI-510 required)
Memory/HDD	4 GB / 250 GB
PDL	PostScript 3 (ver. 3019) PCL 6 / 5c
Operating systems	Windows (x32 / x64): 7 / 8 / 10 Macintosh OS X 10.7 or later

SCANNER SPECIFICATIONS

Scan speed	B&W / Color: up to 240 ipm
Scan resolution	Max.: 600 x 600 dpi
Scan modes	Scan-to-Email, Scan-to-SMB, Scan-to-FTP, Scan-to-Box, Scan-to-USB, Scan-to-WebDAV, Scan-to-DPWS, Network TWAIN scan
File formats	JPEG, TIFF, PDF, PDF/A 1a and 1b (optional), compact PDF, encrypted PDF and searchable PDF (optional), XPS, compact XPS, PPTX and searchable PPTX (optional), searchable DOCX/XLSX (optional)
Scan destinations	2,100 (shared with fax), LDAP support
Scan functions	Annotation (text/time/date) for PDF, up to 400 job programs, real-time scan preview

FAX SPECIFICATIONS

Fax	Super G3 (optional)
Transmission	Analog, Internet fax, Color i-Fax, IP-Fax
Resolution	Max.: 600 x 600 dpi (ultra-fine)
Compression	MH, MR, MMR, JBIG
Modem	Up to 33.6 Kbps
Destinations	2,100 (single + group)
Functions	Polling, time shift, PC-fax, receipt to confidential box, receipt to Email/FTP/SMB, up to 400 job programs

USER BOX SPECIFICATIONS

Storable documents	Max.: 3,000 documents or 10,000 pages
Type of user boxes	Public Personal (with password or authentication) Group (with authentication)
Type of system boxes	Secure print, encrypted PDF, fax receipt, fax polling, annotation
User box functionality	Reprint, combination, download, sending (Email/FTP/SMB and fax), copy box-to-box

SYSTEM FEATURES

Security	ISO 15408 EAL3 ⁴ IEEE 2600.1 ⁴ IP filtering and port blocking SSL2, SSL3 and TSL1.0 network communication IPsec support IEEE 802.1x support FIPS 140-2 User authentication Authentication log Secure print Hard disk overwrite (8 standard types) Hard disk data encryption (AES 128) Memory data auto deletion Confidential fax receipt Print user data encryption Copy protection (Copy Guard, Password Copy) optional
Accounting	Up to 1,000 user accounts Active Directory support (user name + password + Email + SMB folder) User function access definition Optional Biometric authentication (finger vein scanner) Optional ID card authentication (ID card reader)
Software	PageScope Net Care Device Manager PageScope Data Administrator PageScope Box Operator PageScope Direct Print Print Status Notifier Driver Packaging Utility Log Management Utility

¹ Maximum monthly duty cycle describes the maximum number of pages a device can output on a monthly basis. This specification is a guideline intended to offer a comparison of durability as it relates to the entire Konica Minolta MFP and printer product line so that the appropriate device can be placed in order to meet customer needs.

² Warm-up time may vary depending on the operating environment and usage.

³ Supports x64 only.

⁴ Certification pending.

COMPONENTS AND OPTIONS

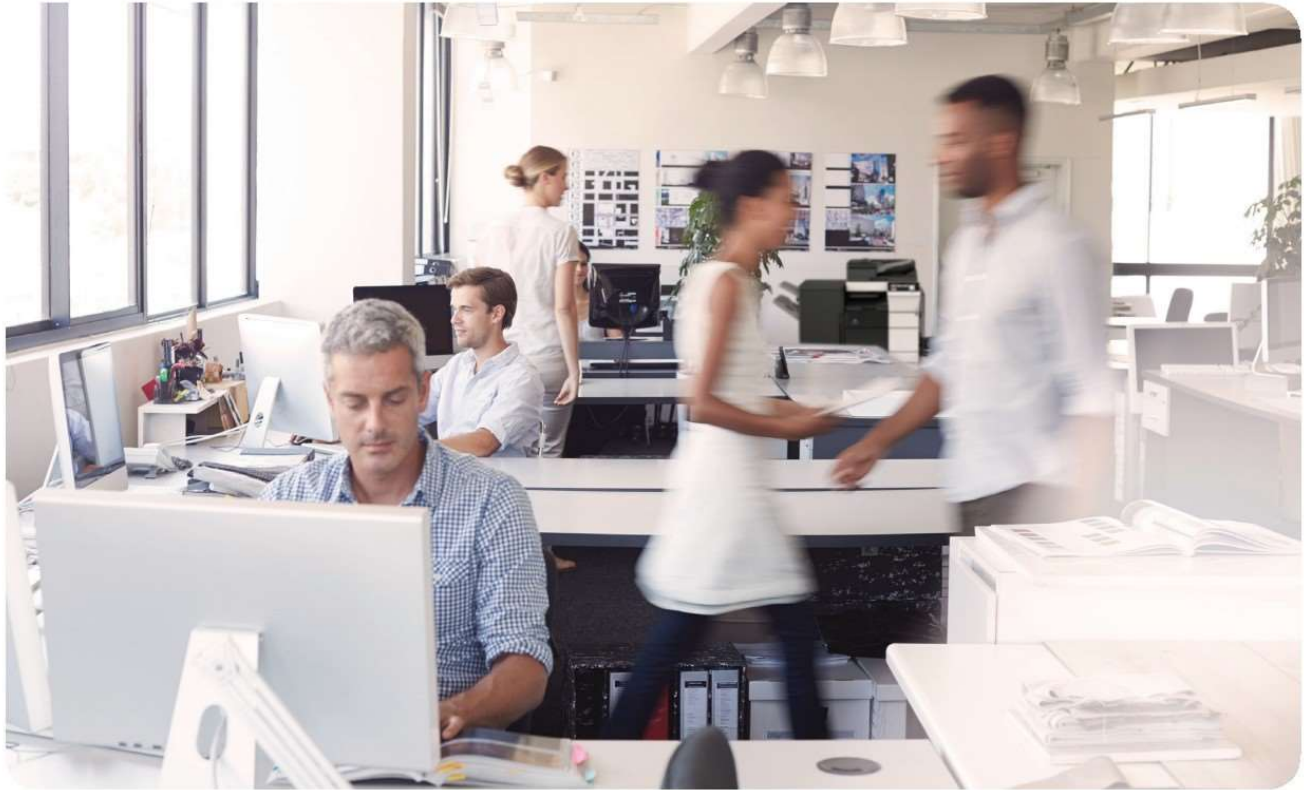
AU-102 Biometric authentication	Finger vein scanner
AU-205H Universal ID card reader	Various ID card technologies
AU-211 CAC/PIV solution*	Requires WT-506 Working Table
EK-610 USB I/F kit	USB keyboard connection
EK-611 USB I/F kit	USB keyboard connection, Bluetooth
FK-516 Fax board	Super G3 fax, digital fax functionality
FK-515 Fax board	Super G3 fax, digital fax functionality, lines 3 & 4 support (requires MK-742)
FS-536 Staple finisher	50-sheet stapling, 3,200 sheets max. output
FS-536SD Booklet finisher	50-sheet staple finisher, 20-sheet booklet finisher, 2,500 sheets max. output
FS-537 Staple finisher	100-sheet stapling, 3,200 sheets max. output
FS-537SD Booklet finisher	100-sheet stapling, 20-sheet booklet finisher, 2,500 sheets max. output
HD-524 Hard disk	Backup HDD
IC-418 Fiery image controller	Embedded image controller for graphics-intensive applications
JS-602 Job separator for FS-537	Separation for fax output, etc.
Keyboard	External keyboard (requires KH-102)
KH-102 Keyboard holder	To place USB keyboard
KP-101 10-Key pad	For use instead of touchscreen
LK-102 v3	PDF/A, PDF encryption, digital signature
LK-104 v3	Provides voice guidance functions
LK-105 v4	Searchable PDF
LK-106	Supports native barcode printing

COMPONENTS AND OPTIONS (CONTINUED)

LK-107	Supports native Unicode printing
LK-108	Supports native OCR A and B font printing
LK-110 v2	Generates various file formats incl. DOCX, XLSX and combines LK-102 (encrypted PDF) + LK-105 (searchable PDF/OCR functionality)
LK-111	ThinPrint® Client data compression for reduced network impact
LU-205 Large capacity unit	2,500 sheets / 8.5" x 11" to 12" x 18" / 52-256 gsm
LU-303 Large capacity unit	3,000 sheets / 8.5" x 11" / 52-256 gsm
MK-715 Mount kit	Banner paper guide
MK-735 Mount kit	Installation kit for ID card reader
MK-742 Mount kit	Installation kit for FK-515 fax board
OT-508 Output tray	Output tray used instead of finisher
PI-507 Post inserter for FS-537	Cover insertion, post finishing
PK-520 Punch kit for FS-536	2/3-hole punching, autoswitching
PK-523 Punch kit for FS-537	2/3-hole punching, autoswitching
RU-515 Relay unit	Required for FS-537/FS-537SD and FS-536/FS-536SD
SC-508 Security kit	Copy Guard function (2x required)
SK-602 Staple kit	Added stapling functionality kit
SP-501 Stamp unit	Added fax stamp capability kit
UK-212 Wireless LAN	Wireless LAN to network connector
UK-501 Multi-feed detection kit	Detects multi-feeding in the document feeder
VI-510 Interface kit for IC-418	Fiery controller interface card
WT-506 Working table	Authentication device placement
WT-513 Upright working table	Required to mount the control panel in an upright position, can also be used to hold authentication devices
ZU-609 Z-fold unit for FS-537	Z-fold for 11" x 17" prints

* May not be available at time of launch.





PARTNERSHIP

Konica Minolta can help give shape to your ideas and partner with you to achieve your corporate objectives.

Contact us to realize opportunities in:

INFORMATION MANAGEMENT

- Enterprise Content Management (ECM)
- Document Management
- Automated Workflow Solutions
- Business Process Automation
- Security and Compliance
- Mobility
- eDiscovery Services

IT SERVICES

- Application Services
- Cloud Services
- IT Security
- Managed IT Services
- IT Consulting & Projects
- Business Consulting Services

TECHNOLOGY

- Office Multifunction Business Solutions
- Commercial and Production Printers
- 3D Printers
- Wide Format Printers
- Laptops, Desktops and Computer Hardware
- Servers and Networking Equipment
- Managed Print Services (MPS)
- Managed Enterprise Services



For complete information on Konica Minolta products and solutions, please visit: CountOnKonicaMinolta.com

© 2017 KONICA MINOLTA BUSINESS SOLUTIONS U.S.A., INC. All rights reserved. Reproduction in whole or in part without written permission is prohibited. KONICA MINOLTA, the KONICA MINOLTA logo and bizhub are registered trademarks or trademarks of KONICA MINOLTA, INC. All other product and brand names are trademarks or registered trademarks of their respective companies or organizations. All features and functions described here may not be available on some products. Design & specifications are subject to change without notice.



KONICA MINOLTA

KONICA MINOLTA BUSINESS SOLUTIONS U.S.A., INC.
100 Williams Drive, Ramsey, New Jersey 07446

CountOnKonicaMinolta.com



Item #: C659SS
12/2017-C